

# Amended May 15, 2019

2019

## Yacht Racing Association of Long Island Sound Connecticut Area

### One Design Racing – Sailing Instructions

- RULES** This Series will be governed by rules as defined in The Racing Rules of Sailing (RRS), and the prescriptions of U.S. Sailing, the Ideal 18 and Laser class rules, and the class rules of any other one-design class that chooses to compete.
- NOTICES** Notices shall be posted on each of the four sponsor clubs official notice boards.
- CHANGES TO THE SAILING INSTRUCTIONS** Any change to this document will be posted before 2400 of the Wednesday proceeding the day it will take effect. Any such changes will be communicated to the class representatives (see Appendix A). Oral changes to the sailing instructions may be made on the water per RRS 90.2(c).
- ENTRIES** This series is open to all boats of the Ideal 18, Laser and Laser Radial classes. Other one-design classes with a minimum of three starters will be permitted to race. Each class shall be responsible for setting any eligibility and/or entry requirements. All Ideal 18 and Laser competitors shall endeavor to register online in advance at <http://bit.ly/sunday-YRA-registration>
- On any race day, competitors enter by sailing to the starting area, announcing the name of the skipper, vessel number, and club affiliation to the Race Committee (“RC”) prior to the class’ first warning. Failure to check-in may result in the vessel not being scored. A change of skipper from race to race shall be announced by the skipper and acknowledged by the RC prior to the race’s warning signal.
- SCHEDULE**
- Racing will be held Sundays May 19 to September 15 except May 19 (Ideals only), May 26, June 16 & 23 (OGYC Solstice Regatta), August 4 (YRALIS Championship Regatta), September 1 and September 8. Participating classes may choose to not race on specified days. Any non-sailing days will be communicated by fleet representatives to their members and that day’s race committee. See Appendix A for details.
  - The starting sequence of the first warning shall be 1400
  - Races will start as soon as possible after the last vessel finishes
  - No warning signal shall be made after 1700
  - As many races shall be run each race day as practicable
- RADIO COMMUNICATIONS** The race committee may use VHF Channel #65A to make course and OCS announcements. Failure to make such a hail, failure of a boat to hear such a hail or the order of hailing, shall not be grounds for redress.

- RACING AREA** The racing area will be ¼ NM southeast of Red Rock in Captains Harbor. PHRF racing may include Long Island Sound.
- The starting line shall be between a staff displaying a colored flag on the signal boat on the starboard end and a mark on the port end.
  - The finishing line shall be between a staff displaying a colored flag the port end and a mark (T) on the starboard end.
  - The Start / Finish line is open and may be disregarded when not starting or finishing.
- STARTING PROCEDURES**
- One-designs shall be given a three minute sequence as per RRS Appendix U. Boats whose warning signal has not been made shall avoid the starting area during the starting sequence for other races. Failure to do so can result in disqualification by the race committee without a hearing.
  - A boat starting later than five minutes after her starting signal will not be scored. This changes rule A4.
- CLASS FLAGS & NUMBER ASSIGNMENTS**
- Class flags / number: Ideal 18 – 1; Lasers – 2. Any additional classes shall be given a class flag/number assignment on the water.
- COURSE AND MARKS**
- One design courses will be announced orally and may be posted. Courses may reference Appendix A.
  - Rounding marks for one-design courses shall be left to port.
  - A boat that passes north of Red Rock buoy or New Foundland Reef buoy or south of Hens and Chickens Can C-1A or Cormorant Reef Nun 4 shall be deemed to have not sailed the course and may be protested by other boat. If observed having done so by the race committee, such boat shall be disqualified without a hearing.
- TIME LIMIT**
- The time limit for the first boat to finish for any one-design class is 45 minutes.
  - One-design boats that fail to finish within ten minutes after the first boat in their class sails the course and finishes (the time limit window) will be scored time limit expired (TLE).
  - Boats scored TLE will be awarded a finish equal to the last boat in her class that finished within the time limit window made worse by two but not worse than DNF. This changes rules 35, A4 and A5.
- PENALTIES**
- The first two sentences of rule 44.1 are changed to: A boat may take a One-Turn Penalty when she may have broken a rule of Part 2 or rule 31 while racing. However, when she may have broken a rule of Part 2 while in the zone around a mark other than a starting mark, her penalty shall be a Two-Turns Penalty.
  - RRS Appendix V2, Penalty Taken After a Race applies whereby a boat may make a post-race penalty of 30% per rule 44.3(c) but shall not be taken after a protest hearing involving the incident has begun.

**PROTESTS**

- Boats shall announce their intention to protest as soon as possible at the end of the race and repeat such announcements until acknowledged by the Race Committee.
- Protests shall be in writing and delivered to any of the sponsoring club's Race Committee (or its designee) prior to 2000 of the day of racing
- Per Appendix T, arbitration will be held prior to a protest hearing subject to the terms of the Section.
- Hearings will be held at the Club of that day's race committee at 2000 on the Wednesday following unless the parties agree to an alternative time and/or date.

**SCORING**

- All boats that start will be scored
- Calculating the scores are be the responsibility of the individual classes and Clubs.

**QUALIFICATION**

- Must be a member of the YRA of LIS. Visit [www.yralis.org](http://www.yralis.org) for sign-up instructions.
- A qualifying race day is a scheduled race day in which at least one race is completed.
- Sail on 40% of the race days, rounded down to the nearest whole number
- Skipper in 50% or more of the races sailed on each qualifying race day

**PRIZES**

- Fleets with sufficient qualifiers will be awarded prizes by the YRA of LIS.
- Additional prizes may be awarded by the individual fleets or participating Clubs. Contact a Class Representative for more details

**DISCLAIMER OF LIABILITY**

Competitors participate in the series entirely at their own risk, as per RSS 4, Decision to Race. The organizing authorities will not accept any liability for material damage or personal injury or death sustained in conjunction with or prior to, during, or after the series.

**Appendix A:****Class Representatives****Ideal 18**

OGYC

EJ Haskel

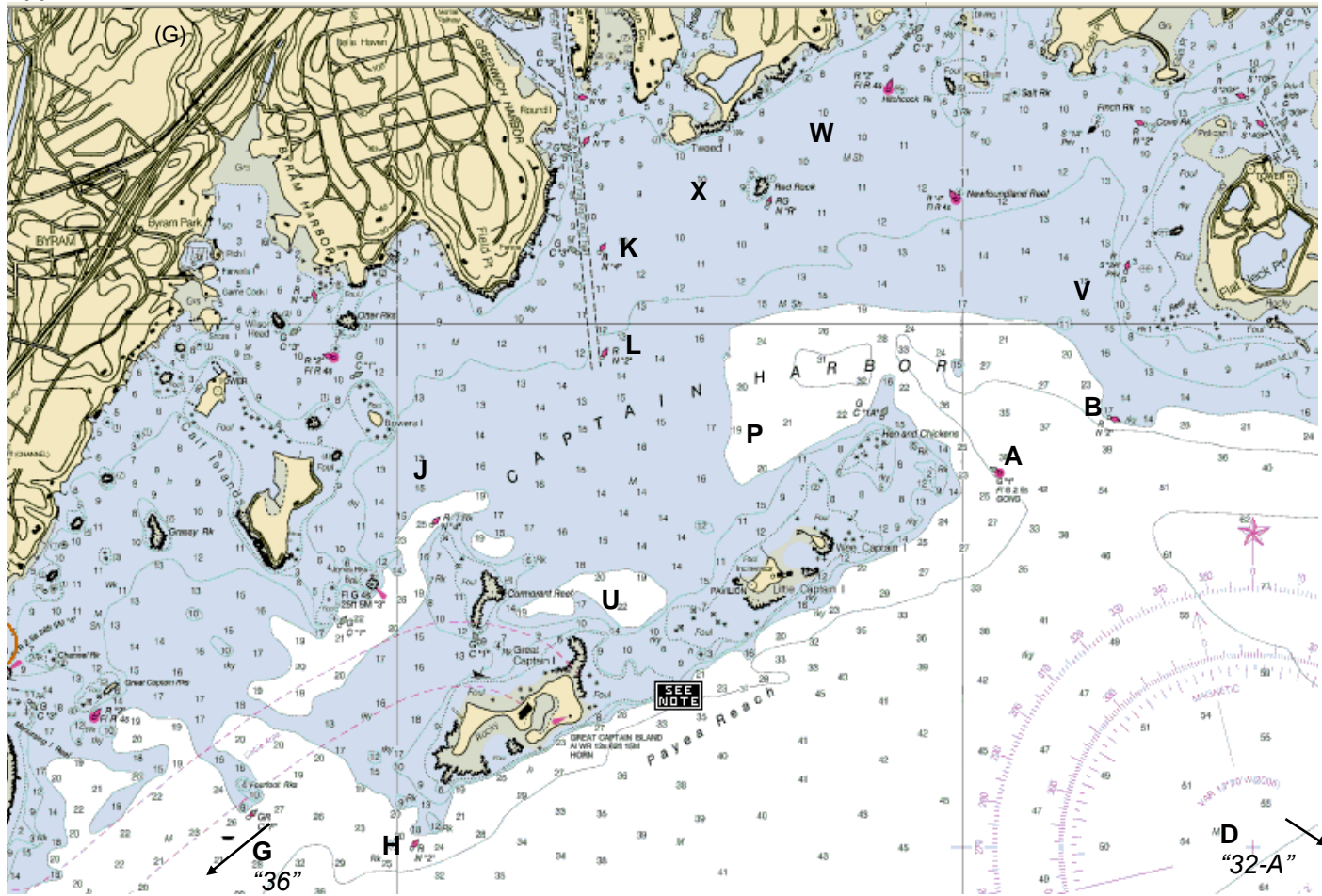
ejbouslough@gmail.com

**Laser**Greenwich Laser Racing: [www.greenwichlaserracing.com](http://www.greenwichlaserracing.com)

John Killeen

killeen\_john@hotmail.com

## Appendix B: Fixed Marks



### YRA Marks

<b>A</b> Gong 1 northeast of Wee Captain Island	<b>K</b> N4, Greenwich Harbor	<b>Q</b> Inflatable mark approximately 0.25 nm to leeward of the start	<b>V</b> Fixed RYC mark west of Sugar Boat
<b>B</b> N2, Flat Neck Point	<b>L</b> N2, Greenwich Harbor	<b>R</b> Fixed BHC mark south of Belle Haven Club	<b>W</b> Fixed RYC mark 0.25 nm ENE of Red Rock
<b>C</b> Inflatable mark approximately 1.50 nm to windward of the start	<b>M</b> Inflatable mark to the port side of the starting line	<b>S</b> Inflatable mark approximately 0.75 nm to windward of the start	<b>X</b> Fixed IHYC mark SW WSW of Red Rock
<b>D</b> Gong 32-A	<b>N</b> Inflatable mark approximately 0.50 nm to leeward of the start	<b>T</b> The finish mark located on the opposite side of the start boat from the starting line	<b>Y</b> Inflatable mark approximately 0.50 nm to windward of the start
<b>G</b> Bell 36, Bluefish Shoal	<b>O</b> Inflatable mark approximately 100 feet to windward of the starboard end of the starting line	<b>U</b> Fixed IHYC mark NNE of Great Captain Island lighthouse	<b>Z</b> Inflatable mark approximately 1.00 nm to windward of the start
<b>H</b> Nun 2, west of Great Captain Island	<b>P</b> Fixed mark north of Wee Captain Island		
<b>J</b> Fixed IHYC mark off Calf Island			

### Exceptions:

Government marks shall be passed on the channel side unless used as a mark of the course, with the following exceptions:

- Marks B, D, K and L may be passed on either side at the discretion of the skipper when not used as a turning mark
- Can C-3, west of Mark K, may be disregarded and left on either hand
- The channel between Cormorant Reef and Great Captain Island shall not be used
- Red Rock buoy and Newfoundland Reef buoy shall be passed on the south side
- Hen & Chickens buoy 1A and Cormorant Reef Red Nun "4" shall be passed on the north side
- The passage between Great Captain & Little Captain Islands shall not be used

**2019**  
**Yacht Racing Association of Long Island Sound**  
**Connecticut Area**

**One Design Racing**

**PRO Reference Document**

**Important instructions**

**Download the scratch sheet and custom score sheet**

The scratch sheet lists all those who have registered. You can find them both at <http://bit.ly/sunday-yra> within the “Docs for PROs” folder.

**Report the day’s results to the Class Representatives**

Take a picture of the score sheet(s) and email it to the Ideal 18 and Laser representatives Sunday evening. Do the best you can to record the active skipper for each Ideal 18 race. The results for the 18s are based on the skipper not the boat.

**Cancelling racing from ashore**

No later than 1315, take the following steps to communicate the cancelation to the competitors.

1. On Channel 65A, broadcast the notification
2. Call the front desk of each Club
3. Send an email to the Class Representatives

**Race Committee Assignments (12)**

<b>Date</b>	<b>Host</b>	<b>Date</b>	<b>Host</b>	<b>Date</b>	<b>Host</b>
May 19	BHC	July 7	RYC	August 11	OGYC
June 2	BHC	July 14	BHC	August 18	IHYC
June 9	IHYC	July 21	RYC	August 25	RYC
June 30	IHYC	July 28	OGYC	September 15	OGYC

**Class Representatives**

**Ideal 18**

OGYC  
EJ Haskel  
ejbouslough@gmail.com

**Laser**

Greenwich Laser Racing: [www.greenwichlaserracing.com](http://www.greenwichlaserracing.com)  
John Killeen  
killeen\_john@hotmail.com

**Host Clubs & Contacts**

Belle Haven Club	Edward Nunes	<a href="mailto:nunesed@nyspi.columbia.edu">nunesed@nyspi.columbia.edu</a>
Indian Harbor Yacht Club	Jack Kruse	<a href="mailto:regatta@indianharboryc.com">regatta@indianharboryc.com</a>
Riverside Yacht Club	Will Morrison	<a href="mailto:racecommittee@riversideyc.org">racecommittee@riversideyc.org</a>
Old Greenwich Yacht Club	Jim Weill	<a href="mailto:race@ogyc.org">race@ogyc.org</a>