

Riverside Dyer Dinghy Association
2019 Single Handed Championship
April 6 & 7, 2019
Sailing Instructions

SCHEDULE: Saturday, April 6th, 2019 and Sunday, April 7th, 2019.

SKIPPERS MEETING: 1215 Sunday Only

FIRST GUN: 1400 Saturday and 1300 Sunday.

NOTICES TO COMPETITORS: Supplemental instructions may be announced verbally or in writing prior to any race by the Race Committee or via the Riverside Dyer Dinghy Association (RDDA) user group email system by the Fleet Captains.

Saturday - Qualifying Series

RULES: All races shall be governed by The Racing Rules of Sailing 2017-2020 (RRS), the prescriptions of US Sailing, the RDDA 2018-2019 Supplemental Sailing Instructions, and these Sailing Instructions (SIs).

The RDDA 2018-2019 Sailing Instructions will apply to the Saturday Qualifying Series, with the exception of Notices to Competitors, Scoring and Prizes and Qualification.

SCORING: A low point scoring system shall be used for the Qualifying Series. There shall be **no discards**; all races in the Qualifying Series count towards qualifying for the Match Racing Series.

Sunday - Match Racing Series

RULES: All races shall be governed by 2017-2020 RRS, including rules in Appendix C – MATCH RACING RULES, the prescriptions of US Sailing, the RDDA 2018-2019 Supplemental Sailing Instructions and these SIs. The following Rules of Appendix C are modified:

C3.1 is modified per these SIs,

C4.1 is modified to: At her preparatory signal, each boat shall be outside the line that is at a 90° angle to the starting line through the starting *mark* at her assigned end. The boat assigned to the port end (see page 2) shall display a blue flag from her starboard shroud while *racing*. The boat assigned to the starboard end of the line and shall display a yellow flag from her starboard shroud while *racing*.

C4.2 is modified to: Within the 60 second period following her preparatory signal, a boat shall cross and clear the starting line, the first time from the course side to the pre-start side,

C6.1(a) is modified to: under a rule of Part 2, except rule 14, by clearly hailing the word “protest” immediately after an incident in which she was involved. If requiring an umpire decision, “umpire” must be hailed.

C6.1(b) is modified to: under any rule not listed in rule C6.1(a) or C6.2 by informing the umpires as soon as possible after the incident,

C6.3 is modified to: A boat intending to request redress because of circumstances that arise before she *finishes* or retires shall inform the umpires no later than two minutes after *finishing* or retiring, and

C6.4 is deleted.

RACES:

Saturday: As many races will be run on Saturday for the Qualifying Series as practical within a two hour time limit. One race will constitute a qualifying series.

Sunday: Races will be run according to the RDDA Match Race Elimination Championship Round diagram outlined in Appendix B to these SIs. Should the Match Racing Series not be completed, the Single Handed Champion (and associated runner up positions) will be determined by the outcome of the Saturday Qualifying Series. Each match in round 1, 2 and 3 will be best 2-out-of-3 races with the low numbered seed (1 is low, 16 is high) competitor having the Starboard end of the starting line for races 1 and 3, if required, of each match. Round 4 and 5 matches will be best 2 out of 3 races with ends determined by a coin toss.

If conditions on Sunday prevent sailing, then the results from Saturday's Qualifying Series will be used to determine the Single Handed Champion.

If conditions on Saturday prevent sailing, then on Sunday a maximum of 3 fleet races will qualify a smaller group of 4 to 8 boats for a match racing series also held on Sunday. The Race Committee PRO will make the determination based on the prevailing conditions.

If conditions on both Saturday and Sunday prevent sailing, then there will be no Single Handed Champion this year.

The instructions below pertain to the Sunday Match Racing Series only.

Participants

Participants in the Match Racing Series will consist of the top sixteen (16) finishers from the previous day's fleet racing portion of the event as scored by the Low Point System in Appendix A4 of the RRS with no discard. The Race Committee reserves the right to take a lower number of competitors into the Match Racing Series of the Single Handed Championship if conditions do not allow for sixteen competitors.

Courses

The Course will be set at the discretion of the Race Committee and may include course W2 or W4. All Match Race marks must be left to starboard. See Appendix A of these SIs.

Marks of the Course

Marks of the course will be orange inflatable balls, the start pin, the finish pin and the associated Race Committee boats.

The Start/finish line will be defined by a floating buoy with a red flag attached at one end of the line and a staff with a red flag on a Race Committee Boat. The Finish line will be defined by a floating buoy with a red flag attached at one end of the line and a staff with a red flag on a Race Committee Boat. Note that the Start line flag on the Race Committee Boat may be repositioned on board the Race Committee Boat prior to any race as conditions warrant.

Starting Sequence

The starting sequence below shall be used for all races. This modifies RRS C3.1. All horns may be created automatically by an Ollie Horn.

<u>Time (m:ss)</u>	<u>Sound</u>	<u>Means</u>
	Repeated horn	Attention
	Announce Round	
3:00	Three Long horns	Warning
2:00	Two Long horns	Preparatory
1:00	One Long	End of pre-start entry
	<i>Whistle**</i>	<i>Failure to enter properly</i>
:30	Three short horns	
:20	Two short horns	
:10	One short horn	
:05, :04, :03, :02, :01	one short horn each second	
:00	One Long	Start

**** ONLY SIGNALLED IF A BOAT HAS NOT ENTERED THE STARTING AREA BY 1:00. IT SHALL BE THE UMPIRE'S RESPONSIBILITY TO CALL A PENALTY ON THE OFFENDING BOAT.**

Subsequent races will start after a brief announcement of the next boats competing. The Race Committee will endeavor to announce the "on deck" competitors as well.

Umpires and Protests

On-water umpires will be provided for each match. The decision of the on-water umpires will be final.

Scoring

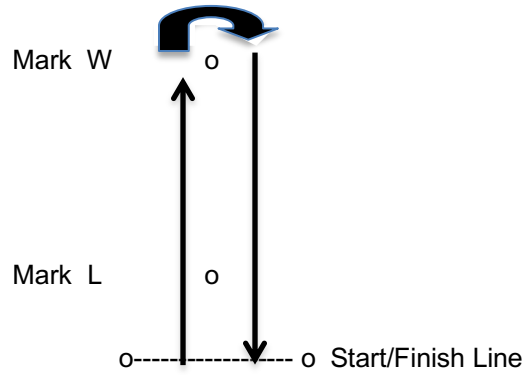
The first boat to win 2 races in each match will proceed to the next round or, if the final match, be declared winner.

PARTICIPANTS' RESPONSIBILITIES: As a condition precedent to his or her participation in any race or series (including without limitation all activities relating thereto) sponsored or undertaken by the Riverside Yacht Club, Inc. or the Riverside Dyer Dinghy Association, each participant agrees that the safety of the boat and its crew and the decision whether or not to start or continue a race is solely his or her responsibility, and each boat and each participant waives any and all claims, including without limitation any claim in respect of assistance given or not given, against Riverside Yacht Club, Inc. or the Riverside Dyer Dinghy Association, and their respective officers, directors, members, committees, employees, or agents, for any injury or damage resulting from such participation.

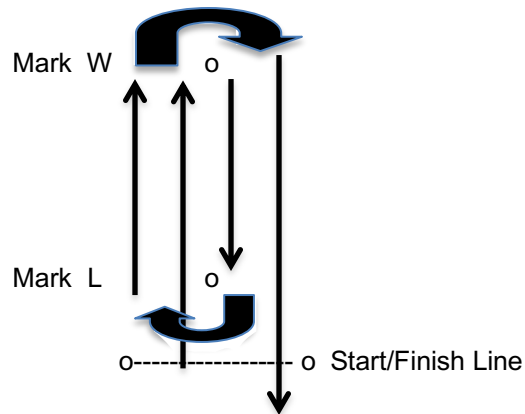
The RDDA strongly recommends that sailors planning to frostbite wear a dry suit while sailing.

RDDA Match Race – APPENDIX A
Courses

Course 1 – W2
Start – W1 – Finish



Course 2 – W4
Start – W1 – L1 – W2 - Finish



RDDA MATCH RACE -- APPENDIX B

2018 Riverside Yacht Club Single Handed Championship

8-Apr-17

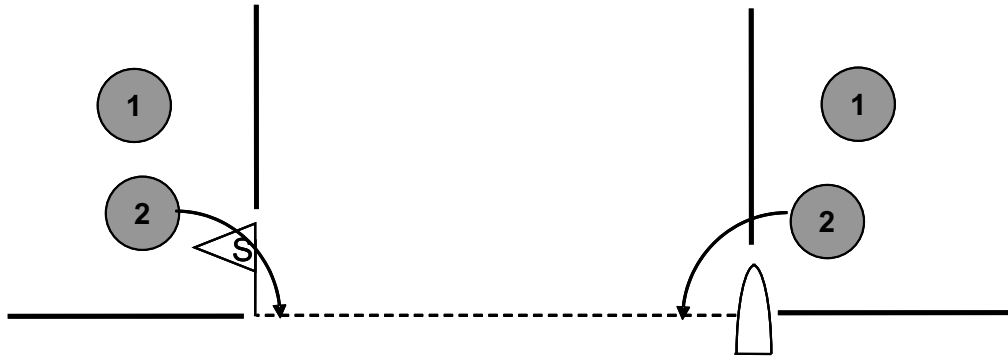
NAME:

Round 1				Round 2				Round 3				Championship Round			
seed	Boat	start side	Races Won	seed	Boat	start side	Races Won	seed	Boat	start side	Races Won	seed	Boat	start side	Races Won
1		S													
match 1				match 9				match 13				match 15			
16		P													
8		S		I											
match 2				I				I				I			
9		P													
4		S		I											
match 3				I				I				I			
13		P													
5		S		I											
match 4				I				I				I			
12		P													
2		S		I											
match 5				I				I				I			
15		P													
7		S		I											
match 6				I				I				I			
10		P													
3		S		I											
match 7				I				I				I			
14		P													
6		S		I											
match 8				I				I				I			
11		P													
Races Sailed				match 12				match 14				match 16			
by Round				I				I				I			
Total				0				0				0			
												Winner			
												2nd			
												3rd			
												4th			

RDDA Match Race Appendix C

Starting Guidelines

"H Format"



Time before Start

1

Immediately before 2:00

Boat must be in the box defined by an extension of the start line on her assigned end of the line and a 90 degree extension to the line at either the starting pin or the flag on the RC boat.

2

Not sooner than 2:00, but not later than 1:00.

Boat must cross and clear the start line from the course side or incur a penalty under C7 (to be taken after starting)